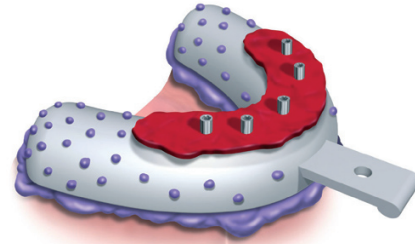


IMPLANT Impression Techniques

Open Tray Indication:

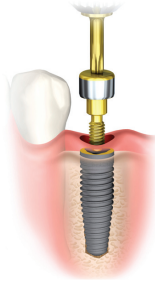
When implants are not parallel and the path of insertion is divergent.

If asking for impression copings, Edmonds Dental Prosthetics will provide closed tray copings unless open tray is requested.



Step 1

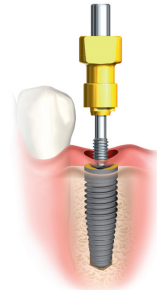
Remove the healing abutment using a screwdriver and rotating counter clockwise.



Step 2

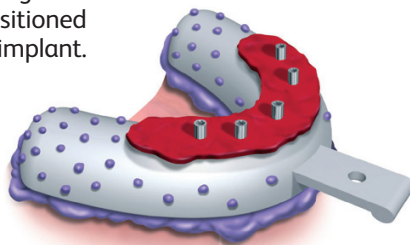
Place the open tray impression coping into implant. Ensure the configuration in the implant.

Tighten guide pin using screwdriver. Verify proper seating of the impression coping.



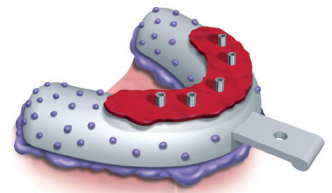
Step 3

Take a radiograph to verify proper seating of impression coping. The radiograph should be positioned parallel to the long axis of implant.



Step 4

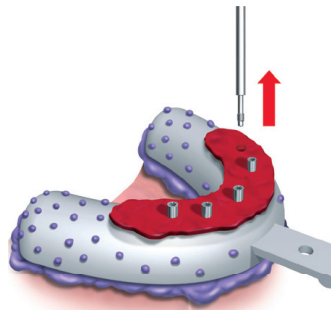
Relieve and perforate impression tray to allow full seating of tray and protrusion of guide pins. If there is a large opening, it may be closed off using baseplate wax, with guide pins indenting or perforating wax. INJECT impression material around each coping. FILL tray with impression material and seat impression tray fully so tips of all guide pins are identified.



Step 5

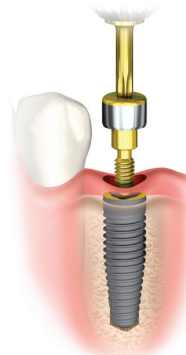
After the impression material has set, unscrew guide pins. Remove impression tray and send to Edmonds, including pin guides.

For model fabrication, corresponding implant replicas will be provided by Edmonds.



Step 5

Replace the healing abutment.



Common Reasons for Retakes

Distorted impression: To prevent distortion, stabilize the tray while material is setting.

Voids & bubbles: Use enough material and keep tip submerged while extruding material

Insufficient capture of detail around coping: Syringe material without creating air bubbles around copings by keeping mix tip submerged.

We Are Here To Help



P: 417.881.8572
P: 800.462.3669
edmondsdentalprosthetics.com